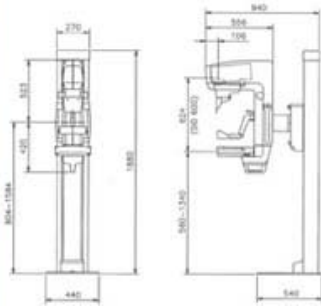


MXR-300 : Discover the improved ACOMA technology in its Quality & Design



Intelligent Automatic Exposure Control (AEC)

With the Automatic Exposure Control System, it is possible to produce images with reliable intensity suitable for any film, screen, or method of radiography. Furthermore, it greatly enhances the convenience of radiography by embedding the Full-AEC function which is capable of utilizing the Auto kV.

General Specification of Mammography MXR-300

- 1) Generator
 - Type : High Frequency Inverter
 - Radiographic rating : Large Focus 22-35kV / 1-600mAs / Small Focus 22- 35kV / 1-100mAs
- 2) X-Ray Tube
 - Focal Spot Size : 0.3mm / 0.1mm
 - Rotating Anode : Molybdenum
 - Anode Heat Capacity : 300KHU
 - Filtration : Mo
- 3) Radiographic Stand (C-arm)
 - Up/Down Movement : 596-1397mm
 - Rotating Movement : R180 degrees/L160 degrees
 - SID : 600mm Fixed distance
- 4) Bucky Device
 - Cassette Size : 18 X 24cm
 - Grid : 4:1, 36Line/cm
- 5) Automatic Exposure Control
 - Type : Solid State Detector
 - Mode : Auto kV/Semi AEC/Manual
 - Density Adjustment : 19steps
- 6) Standard Accessory
 - Face Protection
 - Film Marking Device
 - 18 X 24cm Bucky Device
 - 18 X 24cm Compression Paddle
 - Collimation Plate